
HYDRAULIC MOTORS OF SMW TYPE - DRIVES FOR DRILLING RIGS

Device descriptions:

One of the possible applications of SM Hydro Group's SMW-type hydraulic satellite motors, resulting from the favorable ratio of transmitted power of this type of motors to their weight and dimensions, is to use them as an alternative drive for drilling rigs used in coal mining.

In SM Hydro Group's standard offer there are SMW-type hydraulic satellite motors adapted by their parameters to be installed in drilling rigs of the types: WD 02EA, MDR 03 ATE, MDR 06A, WMD 150, WD 02H and WD 06H. Hydraulic satellite motors of the SMW 0.7/25 and SMW 1.0/25 types can provide an alternative source of propulsion by replacing electric motors. Engines of this type, due to their design and execution, are adapted to supply the medium in the form of low-percentage water-oil emulsion HFA-

The use of the above-mentioned engines in drilling rigs fundamentally improves safety conditions during drilling operations in potentially explosive atmospheres, reduced the inconvenience of the work due to the low weight of the drive, and facilitated the installation of the device at the site.

Hydraulic satellite motors SMW 0,7/25, SMW 1,0/25 type can operate in potentially explosive atmosphere.



All SMW-type motors are suitable for operation on HFA water-oil emulsion. They can also be operated with hydraulic and also vegetable oils.

Detailed information on motors range can be found at www.smhydro.com.pl

MANUFACTURE AND SERVICE

Grupa SM Hydro

ul. Karolinki 10B, 40-467 Katowice

tel.: +48 (32) 353 03 75

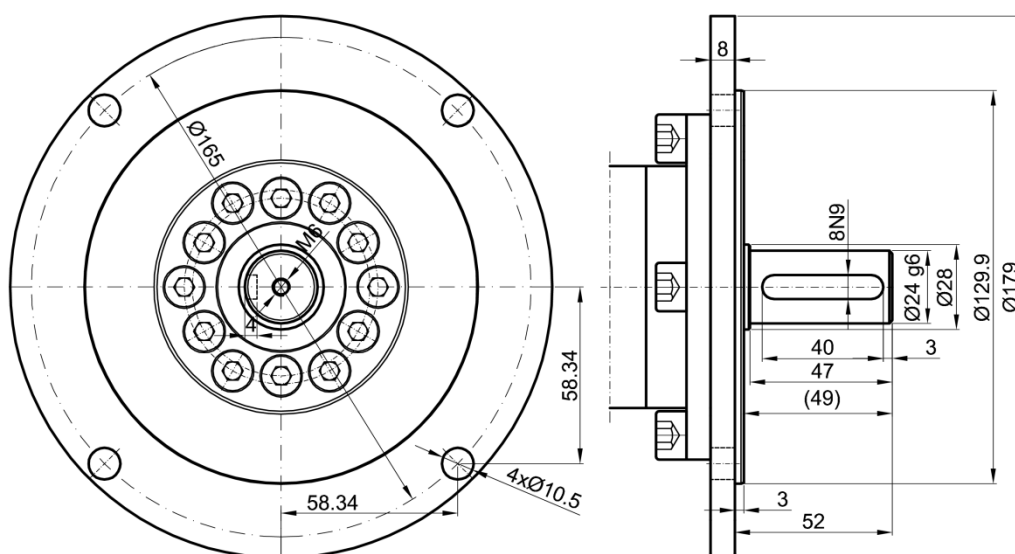
e-mail: biuro@smhydro.com.pl

www.smhydro.com.pl

Technical characteristics of hydraulic motors - drives for drilling rigs:

Drilling rig type		WD-02 EA	MDR-03ATE	MDR-06A	WMD-150	WD-02H	WD-06H
Motor type		SMW-0,7/25	SMW-0,7/25	SMW-1,0/25	SMW-1,0/25	SMW 0,7/25	SMW 1,0/25
Nominal supply pressure*	MPa	22					
Geometrical displacement	cm³/rev	32,9		57		32,9	57
Nominal torque at nominal supply pressure	Nm	100		170		100	170
Rotational speed range	rev/min	2 ÷1500		2 ÷1000		2 ÷1500	2-÷1200
Feed liquid	-	low percentage water – oil emulsion HFA, hydraulic oil					
Filtration	µm	100					
Weight	kg	5,2	6,5	14,8	14,8	4,4	8,0

* Applies only to the supply of HFA emulsion fluids - operation at pressures above 22 MPa accelerates wear of toothed rotating elements of the engine



Hydraulic satellite motor SMW 0,7/25 for drilling rig type WD

MANUFACTURE AND SERVICE

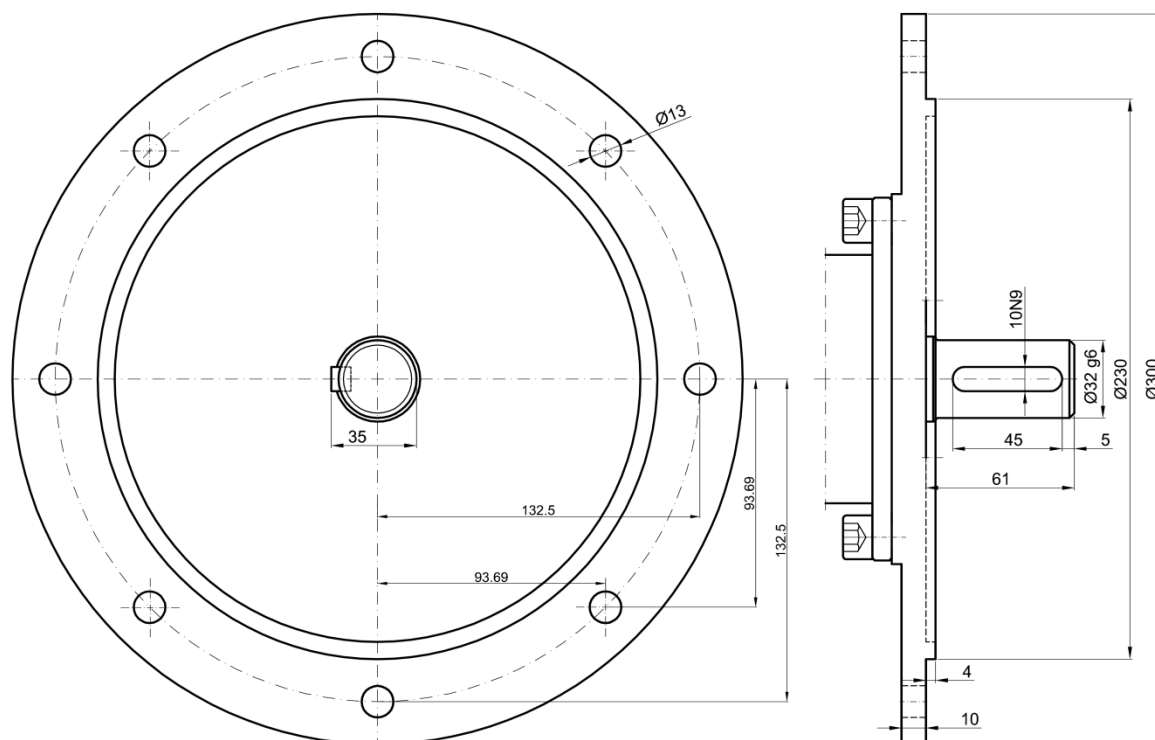
Grupa SM Hydro

ul. Karolinki 10B, 40-467 Katowice

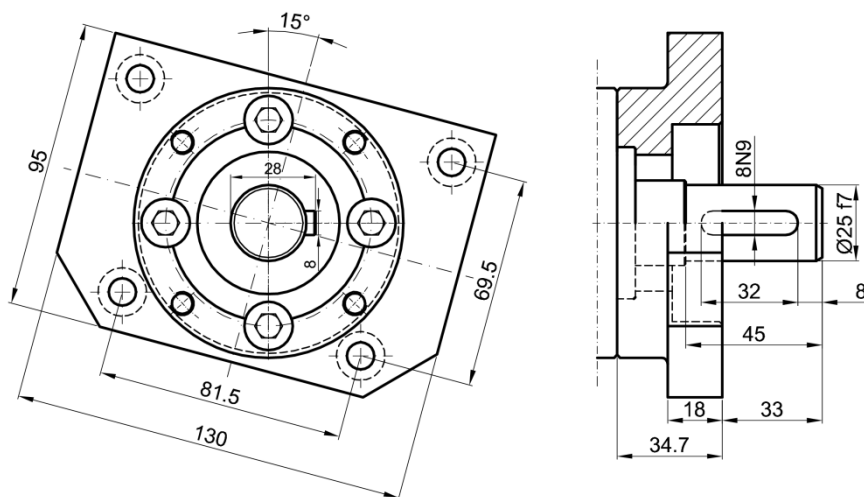
tel.: +48 (32) 353 03 75

e-mail: biuro@smhydro.com.pl

www.smhydro.com.pl



Hydraulic satellite motor SMW 1,0/50 for drilling rigs of type MDR 06A and WMD 150



Hydraulic satellite motor SMW 0,7/25 for drilling rig type WD 02H

MANUFACTURE AND SERVICE

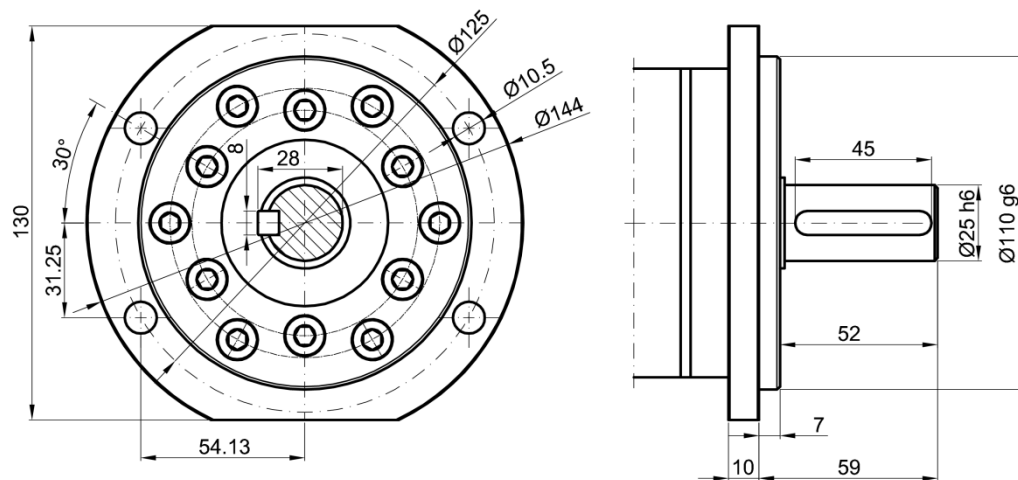
Grupa SM Hydro

ul. Karolinki 10B, 40-467 Katowice

tel.: +48 (32) 353 03 75

e-mail: biuro@smhydro.com.pl

www.smhydro.com.pl



Hydraulic satellite motor SMW 1,0/25 for drilling rig type WD 06H

MANUFACTURE AND SERVICE

Grupa SM Hydro

ul. Karolinki 10B, 40-467 Katowice

tel.: +48 (32) 353 03 75

e-mail: biuro@smhydro.com.pl

www.smhydro.com.pl